


ENG



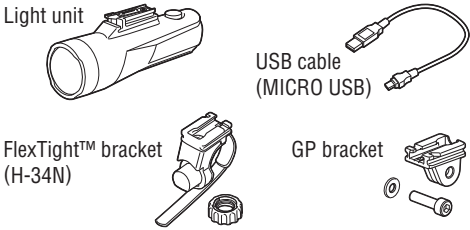
RECHARGEABLE HEADLIGHT
G VOLT 70.1™
 HL-EL552G RC
 Under The Handlebar Mount Model
 Manual

K 1703

Li-ion 3.6 v

Before using the light, read this manual thoroughly and keep it for future reference.

Design Pat. Pending
 Copyright © 2021 CATEYE Co., Ltd.
 HLEL552GRC-210109 2



Always charge the product before use.

Before Initial Use
 This unit is shipped with a small charge to check the light. Be sure to charge it before use, according to the instructions "HOW TO CHARGE".

WARNING!!!

- Be sure to direct the light beam downward so the driver approaching does not get dazzled.
- Before your trip, please make sure the light is firmly mounted to the bracket and it lights up.
- Always attention to the remaining battery power by checking the indicator periodically while using.

CAUTION!

- Do not place it within children's reach.
- In preparation for unexpected battery shutoff, we recommend you carry a spare light.
- This device is rated IPX4 based on JIS C0920. Do not immerse the device in water. Doing so may cause a malfunction. Wipe off any moisture after using the device in rainy weather.
- If the light unit or parts become dirty with mud, etc., clean with a soft cloth which is moistened with mild soap. Never apply paint thinner, benzene or alcohol; damage will result.

LITHIUM-ION BATTERIES
Cautions on recharging

- Avoid charging in direct sunlight or in a vehicle parked under direct sunlight, and make sure to charge only when the ambient temperature is between 41°F and 104 °F (5 and 40°C).
- Before charging, be sure that no dust or other foreign objects attach to the USB plug.
- Do not subject the light to vibrations while charging.
- Once charging is complete, be sure to disconnect the USB plug.

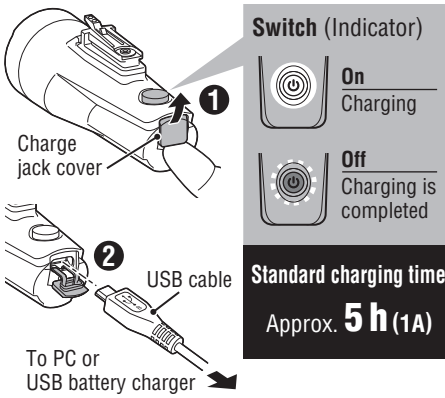
Cautions in use

- Charging, discharging, and storing in high temperatures will cause the rechargeable battery to deteriorate faster. Do not place the light inside a vehicle or near a heater.
- If the illumination time is significantly reduced even after proper charging, the rechargeable battery may be nearing the end of its service life. Dispose of the battery as described in "Cautions for dispose".

Cautions on storage
 Cool and dry storage is recommended. For long period storage, it is important to charge the battery 30 minutes every 6 months.

Cautions on dispose
 When disposing of the light unit, remove the internal rechargeable battery and dispose of it according to local regulations.

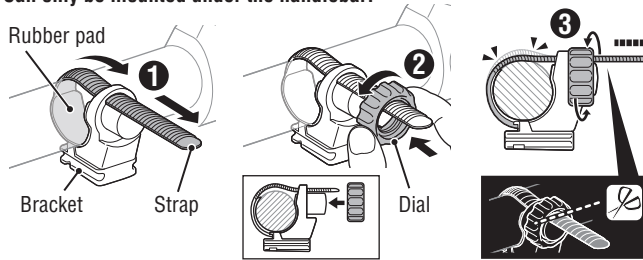
1 HOW TO CHARGE



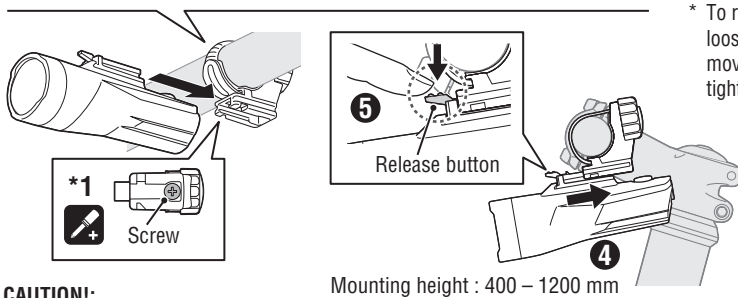
1. Connect the light unit to your PC or a commercial USB battery charger using the USB cable. (Fig 1 ①-②). The switch indicator turns on and charging starts.
 - * When your PC is in sleep state, the unit cannot be charged.
 - * We recommend using 1+A USB battery charger.
2. After charging is completed, remove the USB cable, and install the charge jack cover.
 - * Charging and lighting times are approximate values, and will vary by environmental and user conditions.

2 HOW TO MOUNT TO A BICYCLE

Can only be mounted under the handlebar.



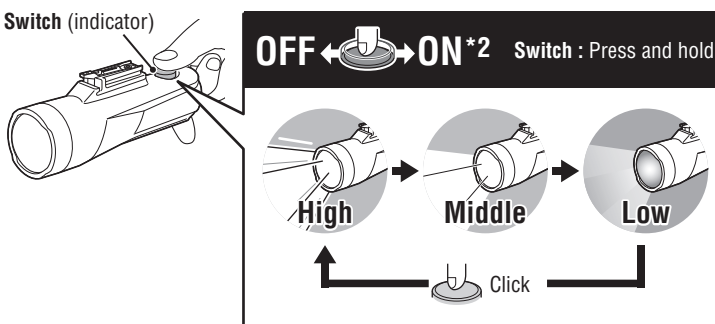
1. Mount the bracket to the handlebar. (Fig 2 ①-③)
2. Insert the light unit into the bracket until it clicks, and adjust the beam angle. (④)
3. To remove the light unit, depress the release button (⑤) on the top of the unit and pull the unit forward.
 - * To re-adjust the beam angle, loosen the dial enough to move the bracket, and firmly tighten it after adjustment.



CAUTION!:

- Be sure to tighten the dial by hand. When you tighten it too hard with a tool, the screw thread may be stripped.
- Check the dial and screw (*) on the bracket periodically, and use them without any loosening.
- Round off the cut edge of the bracket strap to prevent injury.

3 SWITCH OPERATION



*2 : When turning the light on, it lights up in the mode that was used last time. (Mode memory function)

Remaining battery capacity:
 When the switch (indicator) lights up, the remaining battery power is 20% or less.
 * It is no longer functioning properly according to the German Road Traffic Licensing Regulations (StVZO). Please charge as soon as possible.



Indicator (Light up)

SPECIFICATIONS

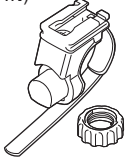
Light source	High-intensity LED x 1	Standard charging time	Approx. 5 hours (1 A)
Battery type	Li-ion 3.6 v - 3400 mAh	Temperature range	Charging : 41°F - 104°F (5°C - 40°C) Operating : 14°F - 104°F (-10°C - 40°C)
Charge	Micro USB plug	Recharge/discharge number of times	About 300 times (until the rated capacity drops to 70%)
Operating time	High : Approx. 4 hours Middle : Approx. 5.5 hours Low : Approx. 25 hours * Average runtime at 20°C.	Dimensions/weight	1-27/64" x 4-3/16" x 1-53/64" (36 x 106.5 x 46.5 mm) / 3.5 oz (100 g)

* The specifications and design are subject to change without notice.

SPARE / OPTIONAL PARTS

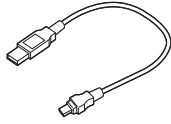
5338827N

FlexTight™ bracket
(H-34N)



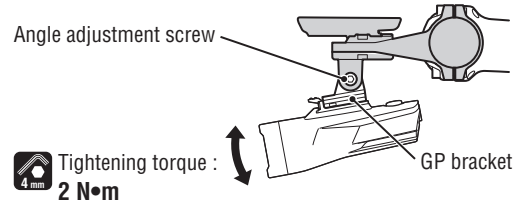
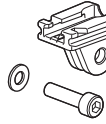
5342730

USB cable
(MICRO USB)



5445340

GP bracket



LIMITED WARRANTY

2-year Warranty: Light unit only (excludes battery deterioration)

CatEye products are warranted to be free of defects from materials and workmanship for a period of 2 years from original purchase. If the product fails to work during normal use, CatEye will repair or replace the defect at no charge. Service must be performed by CatEye or an authorized retailer. To return the product, pack it carefully and enclose the warranty certificate (proof of purchase) with instruction for repair. Please write or type your name and address clearly on the warranty certificate. Insurance, handling and transportation charges to CatEye shall be borne by person desiring service.

CATEYE CO., LTD.

2-8-25, Kuwazu, Higashi Sumiyoshi-ku, Osaka 546-0041 Japan
Attn : CATEYE Customer Service Section
Phone: (06)6719-6863
Fax : (06)6719-6060
E-mail: support@cateye.co.jp
URL : www.cateye.com